

**WELCOME!**



*Prof Alastair Hay,  
 AFRI-c Chief Investigator*

Welcome to our first AFRI-c newsletter. I would like to thank all the care homes, residents and their families that are involved in the AFRI-c study. Your input and willingness to take part will allow us to find out whether using air filters in care homes can help prevent winter coughs, colds, flu and COVID-19.

I am delighted that 9 care homes have now been randomised to one of the two groups. Remember both groups are essential to the study, we can't find out if air filters make a difference to infection rates unless we have care homes in both the usual care and the air filter groups. At the end of the study, we will use information about infections (from the daily data collection) from all care homes. We will compare information from care homes using air filters and those not using air filters. This will help us work out whether air filters help to prevent respiratory infections.

*Prof Alastair Hay*

**Update on Participating Care Homes**

We are delighted to announce that 9 care homes have joined the study. Five have already started daily data collection and the other care homes will soon be ready to join them.

- Beenstock was the first care home to be randomised.
- Summerlands was the first to start daily data collection.
- Bradbury House & Summerlands have consented all ten residents.
- Kineton was the fastest to get up and running in just over a week.
- Robert Harvey House was the quickest to have the initial meeting.
- Horfield are part of the largest charity care provider for older people in the UK.
- Chesters were the fastest care home to start consenting after randomisation.
- Ridgeway Rise and Alexandra Care Home are our most recent care homes to open.

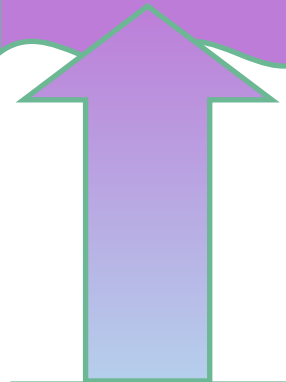
Congratulations to all our care homes joining the study, we look forward to working with you!

We are setting up a few other care homes & hope to bring them on board soon.

We need you to help reach our target by the end of Winter 1



**Target is 5351 daily data collection days**



**456 days currently entered on database (as of 15th March)**

**Database Training Reminder**

Hooray! The AFRI-c database is now fully functioning. Study champions and staff collecting data need to watch the 5 videos specific to your allocated group i.e. either air filters or usual care. The training videos were added to the AFRI-c training page on 22nd Feb:

[https://afric.blogs.bristol.ac.uk/training-modules/#Database\\_training](https://afric.blogs.bristol.ac.uk/training-modules/#Database_training)

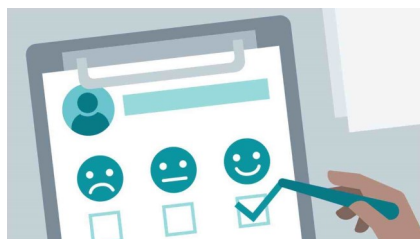
Please remember to submit your Training Log once you have completed this training.

**If you haven't completed the training yet, please do it as soon as you can.**



## Staff Questionnaires Are Live

We would like to invite all care home staff not involved in consenting to take 2 minutes to anonymously share your opinion about infection prevention and control, and your care home environment.



Your answers will help us to understand the views of care home staff.

Please use the details below to access the questionnaire:

Web address: <https://www.afri.study/>

Username: questionnaire

Password: AFRI\_staff22

## AFRI-c In The News

<https://www.theguardian.com/world/2022/jan/28/cloth-face-masks-ffp2-or-next-generation-alternatives-covid>

Linda Geddes, Science Correspondent for The Guardian recently interviewed Professor Hay for her piece “Is it time to ditch cloth face masks for FFP2 or next-generation alternatives?” (extract below).

### *Air purifiers*

*Air purifiers have long been used in hospital operating theatres to reduce the risk of post-surgery infections, but portable units are increasingly being deployed in schools and care homes on the assumption that they will similarly reduce the risk of coronavirus infections. Although they have been shown to reduce the amount of virus in the air – in some cases to [undetectable levels](#) – such studies have been small, and have not yet proved that air purifiers reduce the risk of infection, to what degree, or how best to deploy them.*

*“They may well work, but we need [this information] to make some sensible, rational, evidence-based decisions,” says Prof Alastair Hay, of the University of Bristol, who is leading a study of portable air purifiers in care homes. He stresses that the presence of*

*an air purifier should not be an excuse to relax other protective measures. “If it turns out that the other behaviours are the ones that are really doing the heavy lifting, then you could end up causing harm.”*



## Introducing Our New Study Team Members

### **Lindsay Armstrong-Buisseret, Research Projects Manager**

Lindsay has managed clinical trials in academia and the pharmaceutical industry for over 20 years and is working with the team at the Bristol Trials Centre to run AFRI-c. Her particular interest is getting patients and the public involved in clinical trials.

### **Laurel Campbell-Smith, Research Nurse**

Laurel qualified as a mental health nurse and is experienced in caring for older adults. She worked clinically on a specialist dementia ward before moving into research and has worked on other studies with patients with dementia. Laurel is excited to be able to support an important study like AFRI-c.

\* \* \* \* \*

In future newsletters we plan to introduce other members of the AFRI-c study team. We would also like to showcase our all-important study champions, please let us know if you would like to be featured or have any suggestions as to what you would like to see included in future newsletters.

For more information about the study and some frequently asked questions, check our website:

<https://afri.blogs.bristol.ac.uk/>

Contact us: [Afric-study@bristol.ac.uk](mailto:Afric-study@bristol.ac.uk)



University of  
BRISTOL



BRISTOL  
TRIALS CENTRE